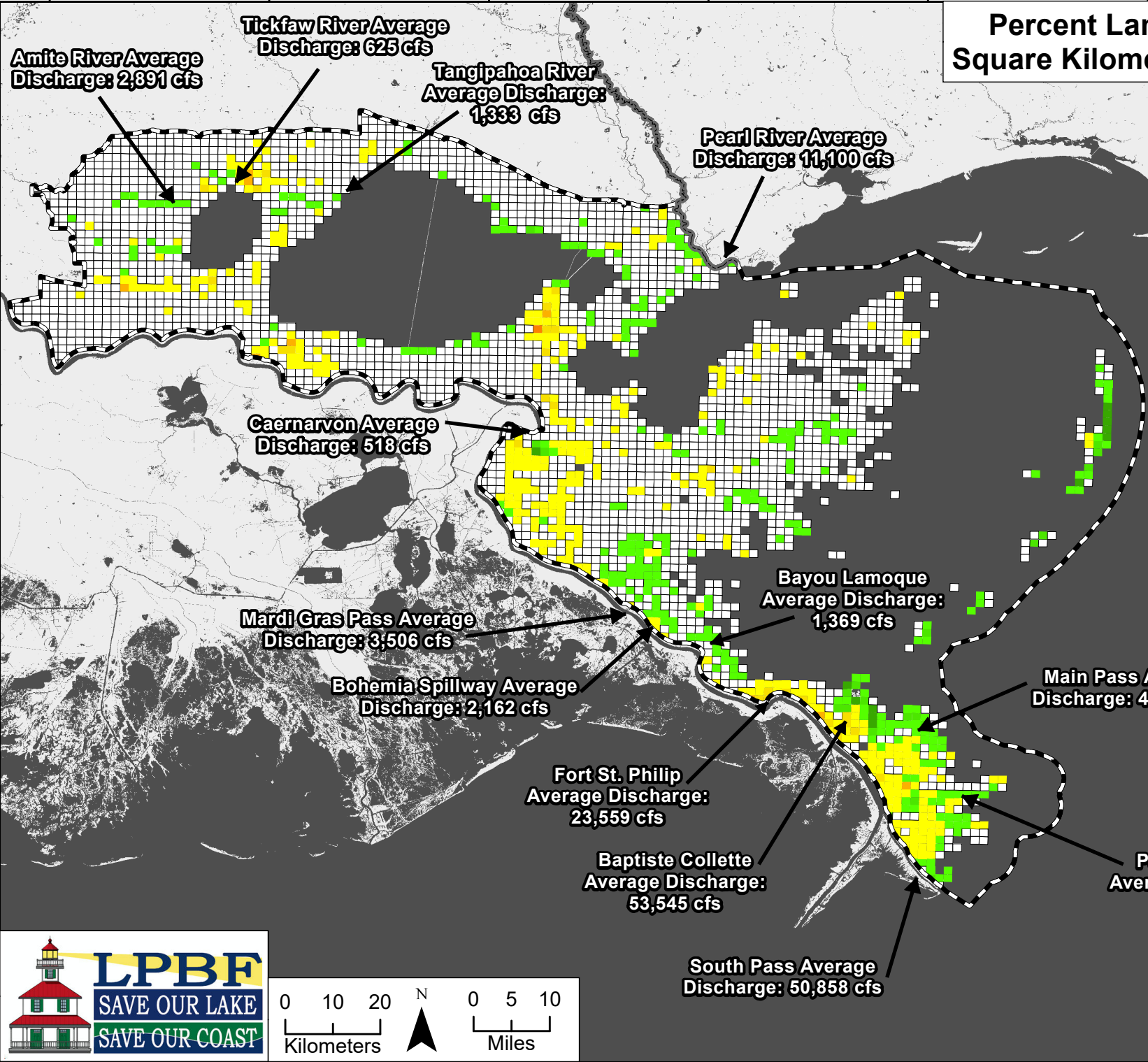
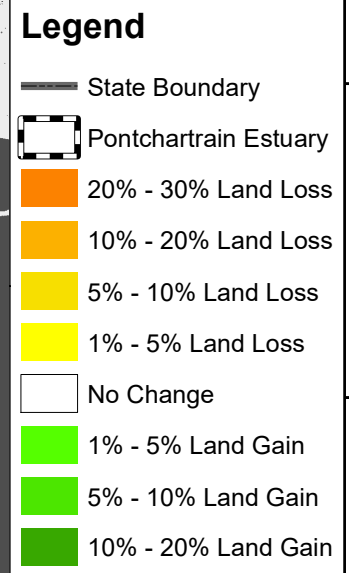


90°50'0"W 90°25'0"W 90°0'0"W 89°35'0"W 89°10'0"W 88°45'0"W 88°20'0"W

Percent Land Change per Square Kilometer (2013 - 2016)



90°50'0"W 90°25'0"W 90°0'0"W 89°35'0"W 89°10'0"W 88°45'0"W 88°20'0"W

30°25'0"N
30°0'0"N
29°35'0"N
29°10'0"N
28°45'0"N

30°25'0"N
30°0'0"N
29°35'0"N
29°10'0"N
28°45'0"N