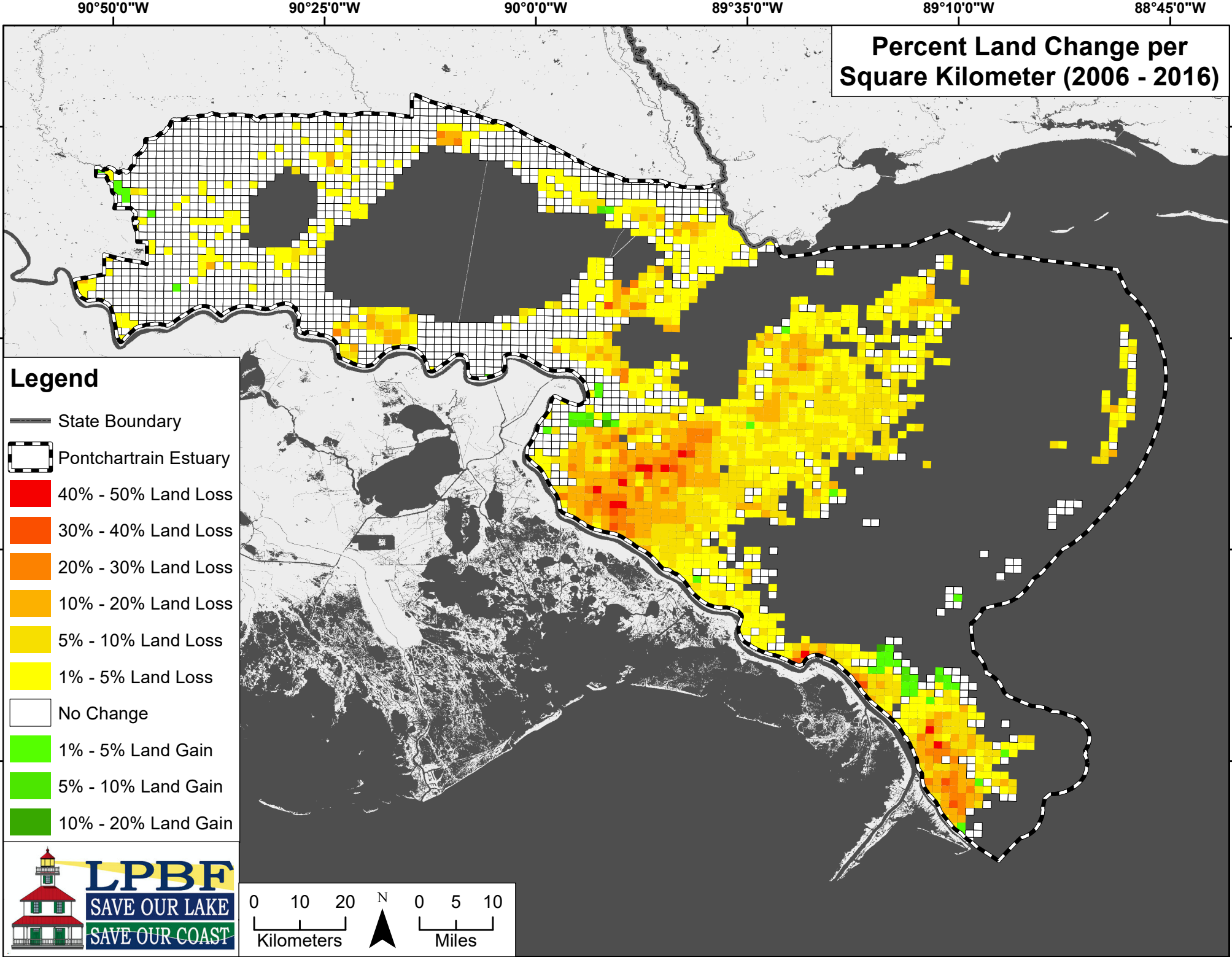


Percent Land Change per Square Kilometer (2006 - 2016)



90°50'0"W

90°25'0"W

90°0'0"W

89°35'0"W

89°10'0"W

88°45'0"W

30°25'0"N

30°25'0"N

30°0'0"N

30°0'0"N

29°35'0"N

29°35'0"N

29°10'0"N

29°10'0"N

90°50'0"W

90°25'0"W

90°0'0"W

89°35'0"W

89°10'0"W

88°45'0"W