



## Request for Proposals

**Proposal Due Date: August 31, 2018**

### Swamp Re-forestation in St. Bernard Parish

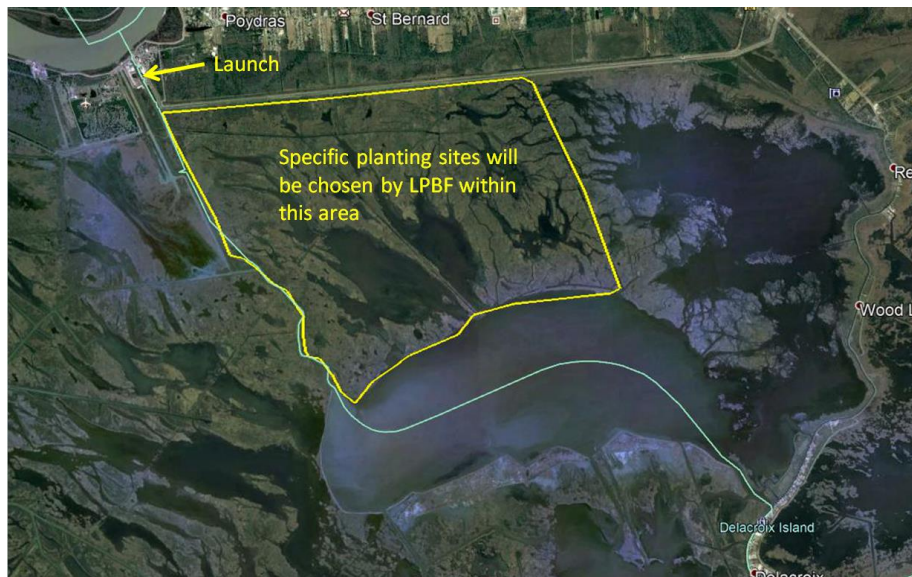
#### RFP Background:

The Lake Pontchartrain Basin Foundation, with partners, began a swamp restoration program in 2010 near the Caernarvon Freshwater Diversion. Since this time, LPBF has expanded its swamp restoration efforts across the basin. Thus far, 61,649 trees have been planted for 315 acres of swamp restoration (Caernarvon and Maurepas regions). Restoration plantings have been done using both volunteer events and commercial plantings. Species used in swamp restoration plantings have been baldcypress (*Taxodium distichum*), water tupelo (*Nyssa aquatica*), blackgum tupelo (*Nyssa sylvatica*), swamp red maple (*Acer rubrum* var. *drummondii*), and green ash (*Fraxinus pennsylvanica*). LPBF sees swamp restoration as a vital component of our Multiple Lines of Defense Strategy (MLODS). Swamp forest can reduce a community's risk from storm surge and is very stable in high winds. LPBF restores swamp in front of levee systems and on critical landscape features that are vital for protecting nearby communities, infrastructure, and assets. Please consult the list of reports in the reference section about past plantings for more information.

#### Proposal Tasks:

LPBF is requesting proposals (bids) for commercial swamp restoration planting in St. Bernard Parish. Proposals must include or consider the following:

- Provide and plant 5,000 trees
- At least 50% of the trees must be baldcypress
- Non-baldcypress trees may be a mix of other species common in natural swamps (species list will have to be approved by LPBF)
- Trees must be grown in 1-gallon pots from local (Louisiana) seed source
- Trees must be live and at least 3 ft. tall
- Provide and properly install nutria protector on each tree
- Provide and properly install bamboo stakes on each tree (minimum 5 ft. length and 0.5 inch diameter)
- Trees planted at 15-foot spacing (approximately 196 trees per acre, 25 acres of restoration)
- Tree will be planted in St. Bernard Psh. near the Caernarvon Freshwater Diversion at a site(s) designated by LPBF
  - All sites will be accessible by either vehicle or boat
  - LPBF will not provide boats and vehicles, the use or rental should be included in bid
- We anticipate that ~ half of the specific tree sites may need all airboat support, and the remaining with prop boats, or have vehicular access along the levee (north boundary). It may be assumed that the Delacroix Corporation Boat Launch area will be available for staging and launching of boats with no charge. (Hwy 39 adjacent to the Caernarvon Diversion, see map)
- Commercial plantings can take place on weekdays or weekends
- Must be willing to sign right of entry/hold harmless agreement with landowner (LPBF will determine landowner identity)
- Must add LPBF and Landowner as and additional insured
- Must provide proof of insurance with a minimum General Liability with \$1,000,000 per occurrence & \$3,000,000 aggregate coverage, worker's comp insurance; and if selected, an USL&H endorsement naming the LPBF & the landowner as additional insureds.
- Trees will need to be inspected by LPBF staff before planting
- LPBF reserves the right to be present during planting work, and needs to be notified 48-hours in advance of planting activity
- Prior plantings have had at least a 70% survival rate. This proposal will be also assessed on the likelihood to have at least this rate of survival considering all aspects of the proposal
- A final field report is required which describes the dates of planting, # trees, species, special circumstances etc.



The general area for planting is outlined in yellow, more specific sites will be chosen by LPBF

### **Time Frame:**

Planting should take place sometime during the Winter 2018/2019 planting season (October 2018- March 2019). LPBF realizes that this is relatively short notice in order to grow tree stock. Therefore, bids proposing to plant through December 31, 2019 will be considered but the earlier planting will be preferred.

### **Proposals Should Include at least:**

- Total price for planting 5,000 trees with the specifications listed above
- Proposed approximate dates for tree inspection and planting
- General description of project plan and timeline
- List of species to be planted
- List or description of relevant experience including any or all of the following:
  - Experience with tree restoration plantings
  - Experience working in marsh/swamp environment
  - Experience with logistics of planting at boat only accessible sites

***The selected service provider will negotiate a final contract with LPBF. Compensation will be in three payments: first payment with execution of the contract, second payment after inspection of the trees (pre-planting); and a final payment after planted trees are inspected by LPBF personnel and all tasks are completed by contractor.***

### **For questions or to submit bids (email only - pdf files preferred):**

John Lopez, Ph.D.

Lake Pontchartrain Basin Foundation Director - Coastal & Community Program  
 C 504 421-7348 W 504 836-2215 Email: [jlopez@saveourlake.org](mailto:jlopez@saveourlake.org)

### **References (see [saveourlake.org](http://saveourlake.org) >Coastal > Technical Documents page) :**

[Caernarvon Delta Report 2011](#)

[Caernarvon Delta Planting July 2012](#)

[Caernarvon Delta Planting Dec 2012](#)

[Caernarvon Delta Planting June 2013](#)

[Caernarvon Delta Planting June 2016](#)

[Also, soon to be released is a monitoring report through 2017 \(check website for updates\)](#)

**Proposal Due Date: August 31, 2018**

Email: [jlopez@saveourlake.org](mailto:jlopez@saveourlake.org)

Email receipt of bids will be confirmed by email reply